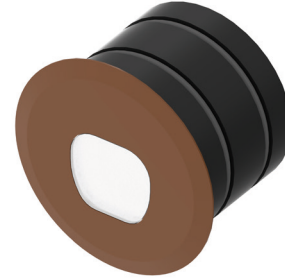


Applicazione
Parete

Faro da incasso asimmetrico IP65 con 1 led da 1,7W.
Corpo e flangia in lega di alluminio con PMMA frontale di protezione.
Installazione a parete con apposita controcassa.
Fornito con 1m di cavo neoprene 2x0,5.
Unità di alimentazione non compresa.

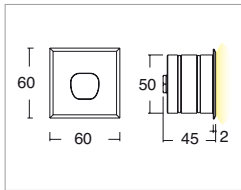
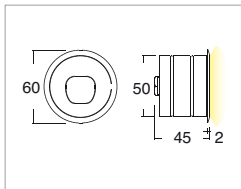
Application
Wall

Recessed asymmetrical spotlight IP65 with 1x1.7W LED
Aluminum alloy body and flange with PMMA front protection
Wall installation with outer casing provided
Provided with 1m of 2x0.5 Neoprene cable
Power supply unit not included



KELVIN	CRI	LUMEN NOMINALE 85° / NOMINAL LUMEN 85°	LUMEN EFFETTIVI / REAL OUTPUT
2700	90	125	~ 100
3000	80	155	~ 125
4000 5000	75	160	~ 130

Argor



Codice/Cod: **3052**

FORMA SHAPE	FINITURA FINISH	COLORE COLOUR	OTTICHE OPTICALS
Tondo / Round 10	Grey ANODIZED 5	5000 K 1	Asymmetric 2
Quadrato / Square 20	Black 6	4000 K 2	Asymmetric diffused 0
	Cor-ten 8	3000 K 3	
		2700 K 4	
		Red 5	
		Green 6	
		Blu 7	

500mA 0,18 EN 60598 2-2

ACCESSORI / ACCESSORIES

30500013	Controcassa / Outer casing
330002100	Alimentatore per max 3pz / Power supply for max 3 pcs
330002200	Alimentatore per min 4pz - max 12pz / Power supply for 4-12 pcs
307500010	Cavo neoprene 2x0,5 / Neoprene cable 2x0.5
307500020	Connettore IP68 / IP68 connector