

JETRO POWER ZOD POWER



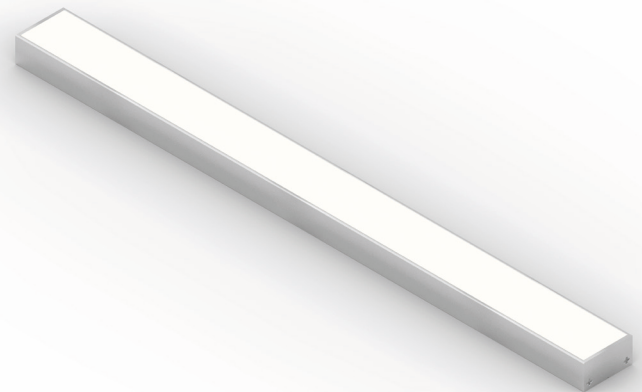
2006/95/CE -- 2002/95/CE -- 1907/2006/CE -- 2010/30/UE -- EN 60598-1 -- EN 60598-2-1 -- EN 62471 -- EN 62031

Applicazione Soffitto / Parete

Profilo lineare IP40 con 112 led/m da 0,25W.
Estruso in lega di alluminio e copertura frontale di protezione in PMMA.
Installazione a soffitto o parete con apposite clip di fissaggio a scomparsa.
Realizzato su misura con lunghezza massima 2m.
Fornito con 1m di cavo 2X0,35.
Unità di alimentazione non compresa.

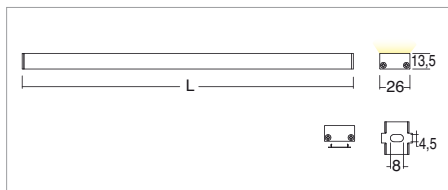
Application Ceiling / wall

Linear lamp IP40 with 112x0.25W LEDs/m
Extruded aluminum alloy body with PMMA front protection.
Ceiling or wall installation with hidden clips provided
Customised length of max 2m
Provided with 1m of 2x0.35 cable
Power supply unit not included



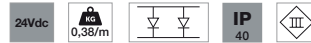
KELVIN	CRI	LUMEN NOMINALE 85° / NOMINAL LUMEN 85°	LUMEN EFFETTIVI / REAL OUTPUT
3000	80	2800/m	~ 2100/m
4000	75	2970/m	~ 2220/m

Jetro Power



Codice/Cod: **3070**

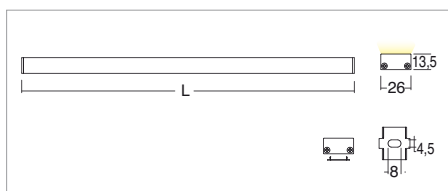
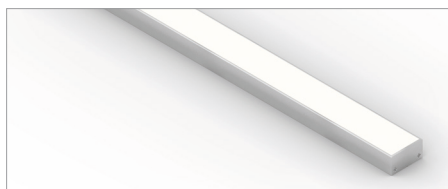
FORMA SHAPE	FINITURA FINISH	COLORE COLOUR	OTTICHE OPTICALS	LUNGHEZZA LENGTH
Lineare / Linear	White Anodized	4000 K 3000 K	Diffused Transparent	(max 2000)
00	3 4	2 3	0 9	



ACCESSORI / ACCESSORIES

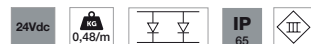
330003500	Alimentatore per max 1,2m / Power supply for max 1.2m
330003400	Alimentatore per max 2m / Power supply for max 2m
330003100	Alimentatore per max 3,4m / Power supply for max 3.4m
307500018	Cavo 2X0,35 / Cable 2x0.35

Zod Power



Codice/Cod: **3074**

FORMA SHAPE	FINITURA FINISH	COLORE COLOUR	OTTICHE OPTICALS	LUNGHEZZA LENGTH
Lineare / Linear	Anodized	4500 K 3500 K	Diffused Transparent	(max 2000)
00	4	2 3	0 9	



ACCESSORI / ACCESSORIES

330003500	Alimentatore per max 1,2m / Power supply for max 1.2m
330003400	Alimentatore per max 2m / Power supply for max 2m
330003100	Alimentatore per max 3,4m / Power supply for max 3.4m
307500016	Cavo PVC bianco 2X0,35 / White PVC cable 2x0.35