

503

Segnapassi / Guide lights



2006/95/CE -- 2002 /95/CE -- 1907/2006/CE -- 2010/30/UE -- EN 60598-1 -- EN 60598-2-1 -- EN 62471 -- EN 62031

Applicazione

Parete

Faro da incasso asimmetrico IP65 con 1 led da 1,7W.

Corpo e flangia in acciaio con resinatura frontale di protezione.

Installazione a parete su scatola 503.

Fornito con 1m di cavo neoprene 2x0,5.

Unità di alimentazione non compresa.

Application

Wall

Recessed asymmetrical spotlight IP65 with 1x1.7W LED

Inox body and flange with resin front protection

Wall installation with 503 outer casing

Provided with 1m of 2x0.5 Neoprene cable

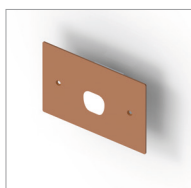
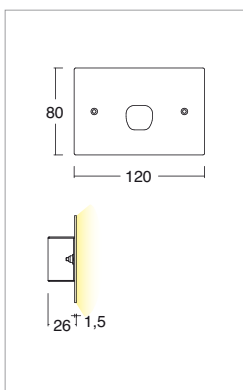
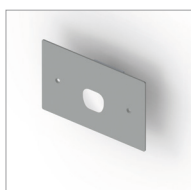
Power supply unit not included

Power supply unit not included



KELVIN	CRI	LUMEN NOMINALE 85° / NOMINAL LUMEN 85°	LUMEN EFFETTIVI / REAL OUTPUT
2700	90	125	~ 100
3000	80	155	~ 125
4000	75	160	~ 130
5000			

503



Codice/Cod: **3126**

FORMA SHAPE	FINITURA FINISH	COLORE COLOUR	OTTICHE OPTICALS
Quadrato / Square	White	5000 K	1 Asymmetric
	Grey	4000 K	2 Asymmetric diffused
	Inox	3000 K	3
	Cor-ten	2700 K	4
		Red	5
		Green	6
		Blu	

500mA 0,19 EN 60598 2-2

ACCESSORI / ACCESSORIES

330006000	Alimentatore per installazione su scatola 503 / Power supply for installation on the 503 outer casing.
330002100	Alimentatore per max 3pz / Power supply for max 3 pcs
330002200	Alimentatore per min 4pz - max 12pz / Power supply for 4-12 pcs
307500010	Cavo neoprene 2x0,5 / Neoprene cable 2x0.5
307500020	Connettore IP68 / IP68 connector