

# ENERU COB

Incassi calpestabili / Recess walk-over spotlights



2006/95/CE -- 2002/95/CE -- 1907/2006/CE -- 2010/30/UE -- EN 60598-1 -- EN 60598-2-1 -- EN 62471 -- EN 62031

## Applicazione

Soffitto / Parete / Pavimento

Faro da incasso carrabile IP66 con 1 led da 3.2W.

Corpo in lega di alluminio e flangia in alluminio o acciaio con vetro frontale di protezione.

Installazione a soffitto, parete o pavimento con molle o con apposita controcassa.

Vetro con serigrafia nera effetto antiabbagliamento.

Fornito con 1m di cavo neoprene 2X0.5.

Unità di alimentazione non compresa.

## Application

Ceiling / wall / floor

Recessed drive-over spot light IP66 – IK10 with 1x3.2W led

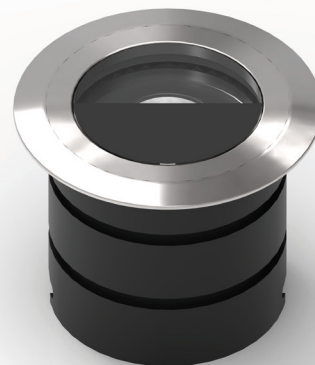
Aluminum alloy body with aluminum or steel flange and glass front protection.

Ceiling, wall or floor installation with springs or outer-casing.

Non dazzling black screen-printed glass Provided with 1m of 2x0.5 neoprene cable

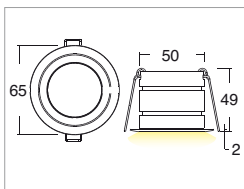
Power supply unit not included

Power supply unit not included



KELVIN	CRI	LUMEN NOMINALE 85° / NOMINAL LUMEN 85°	LUMEN EFFETTIVI / REAL OUTPUT
2700	90	340	~ 110
3000	80	425	~ 140
4000	80	437	~ 150

## Eneru Cob 3,2W versione con molle / with springs



Codice/Cod: **3243**

FORMA SHAPE	FINITURA FINISH	COLORE COLOUR	OTTICHE OPTICALS
Tondo / Round	White	4000 K	Transparent
	Grey	3000 K	Diffused
	Inox	2700 K	

350mA / 3.2Vdc

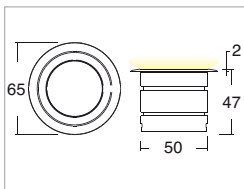
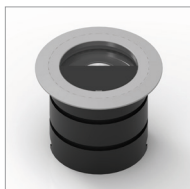


EN 60598 2-2

### ACCESSORI / ACCESSORIES

330001900	Alimentatore per 1pz / Power supply for 1 pc
330002000	Alimentatore per min 2pz - max 5pz / Power supply for 2-5 pcs
307500010	Cavo neoprene 2x0,5 / Neoprene cable 2x0.5
307500020	Connettore IP68 / IP68 connector

## Eneru Cob 3,2W versione con controcassa / with outer casing



Codice/Cod: **3192**

FORMA SHAPE	FINITURA FINISH	COLORE COLOUR	OTTICHE OPTICALS
Tondo / Round	Grey	4000 K	Transparent
	Black	3000 K	Diffused
	Inox	2700 K	

350mA / 3.2Vdc



EN 60598 2-2

### ACCESSORI / ACCESSORIES

305000013	Controcassa / Outer casing
330001900	Alimentatore per 1pz / Power supply for 1 pc
330002000	Alimentatore per min 2pz - max 5pz / Power supply for 2-5 pcs
307500010	Cavo neoprene 2x0,5 / Neoprene cable 2x0.5
307500020	Connettore IP68 / IP68 connector