

ENERU RGB

Incassi calpestabili / Recess walk-over spotlights



2006/95/CE -- 2002/95/CE -- 1907/2006/CE -- 2010/30/UE -- EN 60598-1 -- EN 60598-2-1 -- EN 62471 -- EN 62031

Applicazione

Soffitto / Parete / Pavimento

Faro da incasso carrabile IP66 - IK10 con 6 led da 1W RGB.

Corpo in lega di alluminio e flangia in alluminio o acciaio con vetro frontale di protezione.

Installazione a soffitto, parete o pavimento con molle o con apposita controcassa.

Fornito con 1m di cavo neoprene 6X0,5mm".

Unità di alimentazione non compresa.

Application

Ceiling / wall / floor

Recessed drive-over spotlight RGB IP66 - IK10 with 6x1W LEDs

Aluminum alloy body with aluminum or steel flange and glass front protection.

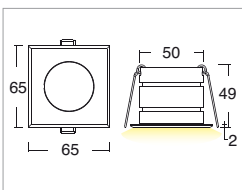
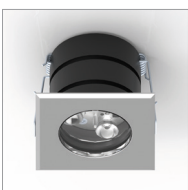
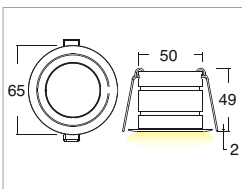
Ceiling, wall or floor installation with springs or special casing

Provided with 1m of 6x0.5 Neoprene cable

Power supply unit not included



Eneru RGB 6W versione con molle / with springs



Codice/Cod: 3140

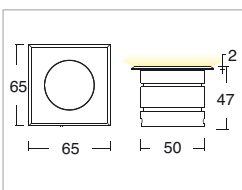
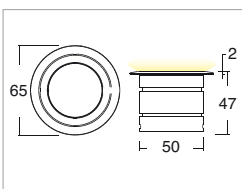
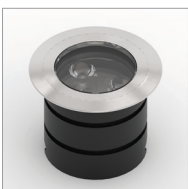
FORMA SHAPE	FINITURA FINISH	COLORE COLOUR	OTTICHE OPTICALS
Tondo / Round	White	RGB	30°
Quadrato / Square	Grey		50°
	Inox		70°
			Diffused

350mA 0,2kg III EN 60598 2-2 EN 60598 2-13

ACCESSORI / ACCESSORIES

330004800	Centralina PUSH per max 4pz / PUSH control unit for max 4pcs
307500013	Cavo neoprene 6x0,5mm". / Neoprene cable 6x0.5
307500021	Anti abbagliamento alveolare / Non dazzling system

Eneru RGB 6W versione con controcassa / with outer casing



Codice/Cod: 3045

FORMA SHAPE	FINITURA FINISH	COLORE COLOUR	OTTICHE OPTICALS
Tondo / Round	Grey	RGB	30°
Quadrato / Square	Black		50°
	Inox		70°
			Diffused

350mA 0,2kg III EN 60598 2-2 EN 60598 2-13

ACCESSORI / ACCESSORIES

305000013	Controcassa / Outer casing
330004800	Centralina PUSH per max 4pz / PUSH control unit for max 4pcs
307500013	Cavo neoprene 6x0,5mm". / Neoprene cable 6x0.5
307500021	Anti abbagliamento alveolare / Non dazzling system