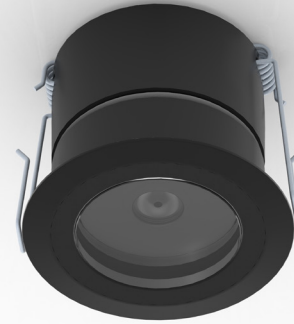


Applicazione
Soffitto / Parete

Faro da incasso IP40 con 1 led da 1,7W.
Corpo in lega di alluminio e flangia in alluminio o acciaio con vetro frontale di protezione.
Installazione a soffitto o parete con molle o con apposita controcassa.
Fornito con 150mm di cavo 2x0,35mm.
Unità di alimentazione non compresa.

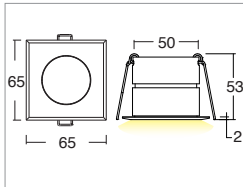
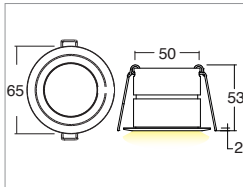
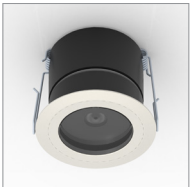
Application
Ceiling / wall

Recessed spotlight IP40 with 1x1.7W LED
Aluminum alloy body with aluminum or steel flange and glass front protection.
Ceiling or wall installation with springs or outer casing provided
Provided with 150mm of 2x0.35 cable
Power supply unit not included



KELVIN	CRI	LUMEN EFFETTIVI / REAL OUTPUT
2700	90	~ 110
3000	90	~140
4000 5000	75	~145

Norka 1,7W versione con molle / with springs



Codice/Cod: **3034**

FORMA SHAPE	FINITURA FINISH	COLORE COLOUR	OTTICHE OPTICALS
Tondo / Round	Light Grey	5000 K	10°
Quadrato / Square	White	4000 K	30°
	Black	3000 K	50°
	Inox	2700 K	Diffused
		Red	
		Green	
		Blu	

500mA EN 60598 2-2

ACCESSORI / ACCESSORIES

- 330002100 Alimentatore per max 3pz / Power supply for max 3 pcs
- 330002200 Alimentatore per min 4pz - max 12pz / Power supply for 4-12 pcs