

## Applicazione

Parete

Faro da incasso asimmetrico IP66 con 1 led da 1,7W.

Corpo e flangia in lega di alluminio con PMMA frontale di protezione.

Installazione a parete con apposita controcassa.

Fornito con 1m di cavo neoprene 2x0,5.

Unità di alimentazione non compresa.

## Application

Wall

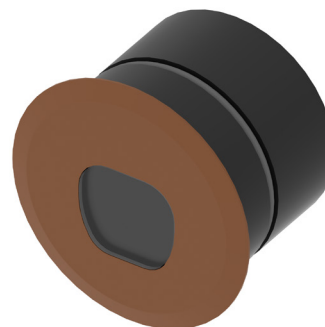
Recessed asymmetrical spotlight IP66 with 1x1.7W LED

Aluminum alloy body and flange with PMMA front protection

Wall installation with outer casing provided

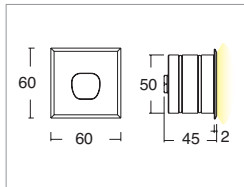
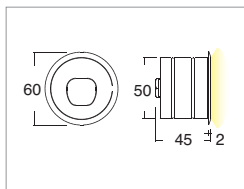
Provided with 1m of 2x0.5 Neoprene cable

Power supply unit not included



KELVIN	CRI	LUMEN EFFETTIVI / REAL OUTPUT
2700	90	~ 100
3000	90	~ 125
4000	75	~ 130
5000		

## Argor



Codice/Cod: **3052** ... ..

FORMA SHAPE	FINITURA FINISH	COLORE COLOUR	OTTICHE OPTICALS
Tondo / Round <b>10</b>	Grey ANODIZED <b>5</b>	5000 K <b>1</b>	Asymmetric <b>2</b>
Quadrato / Square <b>20</b>	Black <b>6</b>	4000 K <b>2</b>	Asymmetric <b>0</b>
	Cor-ten <b>8</b>	3000 K <b>3</b>	diffused <b>0</b>
		2700 K <b>W</b>	
		Red <b>4</b>	
		Green <b>5</b>	
		Blu <b>6</b>	

500mA



EN 60598 2-2

### ACCESSORI / ACCESSORIES

30500013	Controcassa / Outer casing
330002100	Alimentatore per max 3pz / Power supply for max 3 pcs
330002200	Alimentatore per min 4pz - max 12pz / Power supply for 4-12 pcs
307500010	Cavo neoprene 2x0,5 / Neoprene cable 2x0.5
307500020	Connettore IP68 / IP68 connector
307500041	Sistema NOW con convertitore 24Vdc - 500mA / NOW System with 24vdc - 500mA converter