

CASTALIA

Applique / Applique



2006/95/CE -- 2002/95/CE -- 1907/2006/CE -- 2010/30/UE -- EN 60598-1 -- EN 60598-2-1 -- EN 62471 -- EN 62031

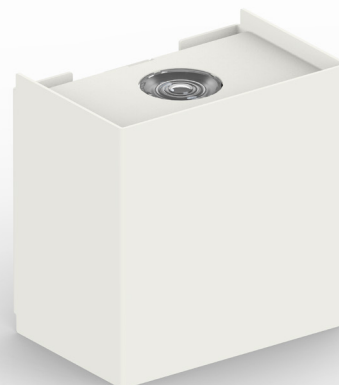
Applicazione Parete

Applique IP20 da 4.8W per emissione.
Corpo in lega di alluminio.
Installazione a parete con apposita staffa.
Dotata di vano tecnico per eseguire la connessione.
Unità di alimentazione incorporata.

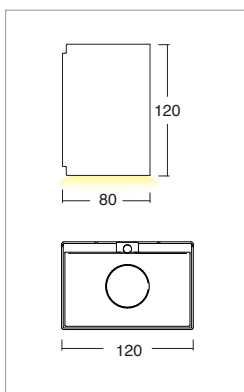
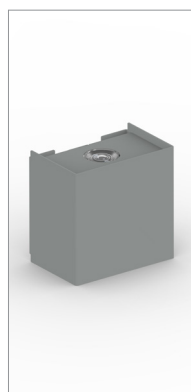
Application Wall

Wall lamp IP20 with 4.8W for emission.
Aluminum alloy body
Wall installation with bracket provided
Technical compartment to make connections
Power supply unit incorporated

| KELVIN | CRI | LUMEN EFFETTIVI / REAL OUTPUT |
|--------|-----|-------------------------------|
| 2700 | 90 | ~ 390/390 |
| 3000 | 90 | ~ 490/490 |
| 4000 | 75 | ~ 505/505 |



Castalia



Codice/Cod: **3091**

| FORMA SHAPE | FINITURA FINISH | COLORE COLOUR | OTTICHE OPTICALS |
|-------------------|-----------------|---------------|------------------|
| Quadrato / Square | White | 4000 K | 20° |
| | Grey | 3000 K | 40° |
| | | 2700 K | 60° |
| | | | Diffused |



EN 60598 2-6