

ENERU COB



Incassi calpestabili / Recess walk-over spotlights

2006/95/CE -- 2002/95/CE -- 1907/2006/CE -- 2010/30/UE -- EN 60598-1 -- EN 60598-2-1 -- EN 62471 -- EN 62031

Applicazione

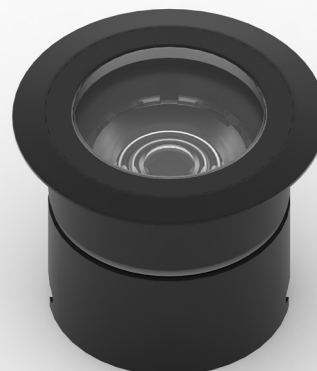
Soffitto / Parete / Pavimento

Faro da incasso carrabile IP66 - IK10 con 1 led da 3,2W.
Corpo in lega di alluminio e flangia in alluminio o acciaio con vetro frontale di protezione.
Installazione a soffitto, parete o pavimento con molle o con apposita controcassa.
Fornito con 1m di cavo neoprene 2x0,5.
Unità di alimentazione non compresa.

Application

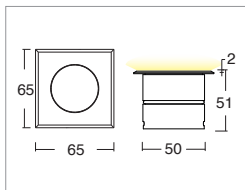
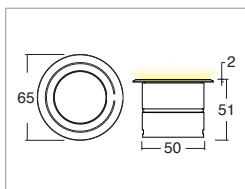
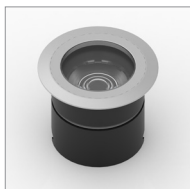
Ceiling / wall / floor

Recessed drive-over spotlight IP66 - IK10 with 1x3.2W LED
Aluminum alloy body with aluminum or steel flange and glass front protection.
Ceiling, wall or floor installation with springs or special casing
Provided with 1m of 2x0.5 Neoprene cable
Power supply unit not included



KELVIN	CRI	LUMEN EFFETTIVI / REAL OUTPUT
2700	90	~ 285
3000	90	~ 360
4000	80	~ 370

Eneru Cob 3,2W versione con controcassa / with outer casing



Codice/Cod: **3154**

FORMA SHAPE	FINITURA FINISH	COLORE COLOUR	OTTICHE OPTICALS
Tondo / Round	10 Grey ANODIZED	5 4000 K	2 20°
Quadrato / Square	20 Black	6 3000 K	3 40°
	Inox	7 2700 K	W 60°
			9 90°
			0 Diffused

350mA



EN 60598 2-2

ACCESSORI / ACCESSORIES

30500013	Controcassa / Outer casing
330001900	Alimentatore per 1pz / Power supply for 1 pc
330002000	Alimentatore per min 2pz - max 4pz / Power supply for 2-4 pcs
307500010	Cavo neoprene 2x0,5 / Neoprene cable 2x0.5
307500020	Connettore IP68 / IP68 connector
307500021	Anti abbagliamento alveolare / Non dazzling system
307500027	Interruzione cavo 2 poli sistema NO-W / NO-W system, 2 pole cable interrupting
307500031	Antiabbagliamento vetro mezzo nero - mezzo trasparente / Non dazzling system with half black and half clear glass
307500032	Antiabbagliamento vetro mezzo nero - satinato / non dazzling system with half black and half sanded glass
307500040	Sistema NOW con convertitore 24Vdc - 350mA / NOW System with 24vdc - 350mA converter