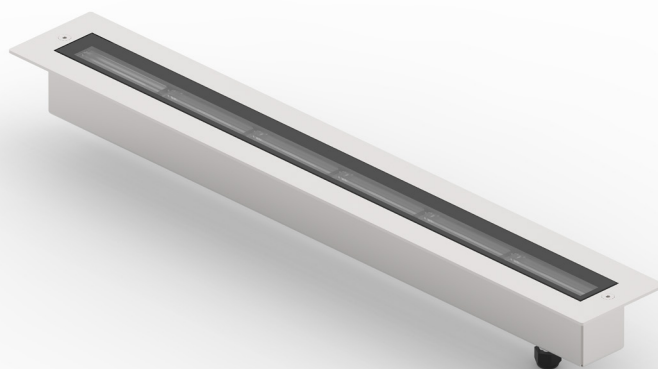


**Applicazione**  
Pavimento

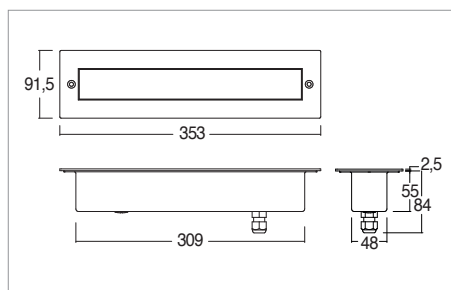
Barra da incasso carrabile IP67-IK10  
Corpo e flangia in acciaio inox aisi 304 e  
vetro frontale di protezione temprato  
Installazione a pavimento con apposita  
cassa  
Fornito con 1m di cavo neoprene 3x1  
Unità di alimentazione incorporata

**Application**  
Floor

Drive-over recessed led bar IP67 - IK10  
AISI 304 steel body and flange with  
temper glass  
Recessed floor installation with outer-  
casing  
Provided with 1m of 3x1 neoprene cable  
Power supply unit incorporated



KELVIN	CRI	LUMEN EFFETTIVI / REAL OUTPUT
2700	90	~ 480
3000	90	~ 600
4000	90	~ 630

**Lete 6W**

 Codice/Cod: **3257**

FORMA SHAPE	FINITURA FINISH	COLORE COLOUR	OTTICHE OPTICALS
Lineare / Linear	Inox	4000 K 3000 K 2700 K	Wall washer Diffused

**220Vac**

1,95

EN 60598 2-2 EN 60598 2-6 EN 60598 2-13

**ACCESSORI / ACCESSORIES**

305000031	Controcassa / Outer casing
307500012	Cavo Neoprene 3X1 / Neoprene cable 3x1
307500005	Connettore IP68 3 poli / IP68 connector