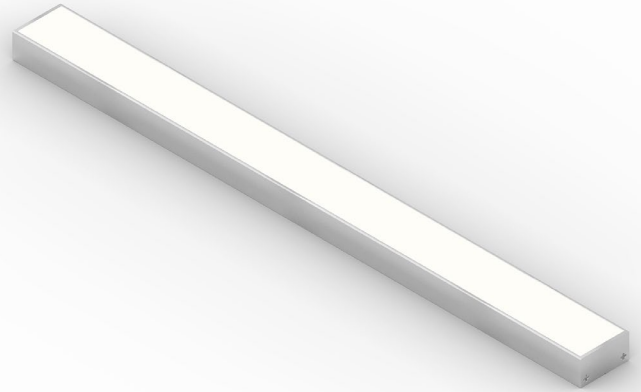


JETRO 29W/m IP65

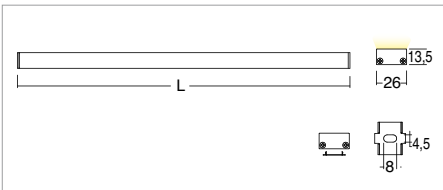


KELVIN	CRI	LUMEN EFFETTIVI / REAL OUTPUT	CLASSE ENERGETICA / ENERGY CLASS
2700	90	~ 1850/m	G
3000	90	~ 1940/m	G
4000	80	~ 2500/m	F

2006/95/CE -- 2002 /95/CE -- 1907/2006/CE -- 2010/30/UE -- EN 60598-1 -- EN 60598-2-1 -- EN 62471 -- EN 62031



Jetro 29W/m IP65



Codice/Cod: **3074**

FORMA SHAPE	FINITURA FINISH	COLORE COLOUR	OTTICHE OPTICALS	LUNGHEZZA LENGHT
Lineare / Linear	Anodized ■ ANODIZED Black ■ RAL 9005	4500 K 3500 K 3200 K	Diffused Transparent	(max 2000)

ACCESSORI / ACCESSORIES

330003300	(Vin 220/240Vac) 24Vdc - 20W
330003400	(Vin 220/240Vac) 24Vdc - 60W
330003500	(Vin 220/240Vac) 24Vdc - 35W
330003100	(Vin 220/240Vac) 24Vdc - 100W
330007100	(Vin 220/240Vac) 24Vdc - 150W
330006600	(Vin 220/240Vac) 24Vdc - 60W - Dimmer Push
330008101	(Vin 24Vdc) - 240W - Dimmer Push, 0-10, 1-10
330008102	(Vin 24Vdc) - 240W - Dimmer Push, 0-10, 1-10, DALI
307500016	Cavo PVC bianco 2X0,35 / White PVC cable 2x0.35
307501034	Supporto lineare con clip premontate / Linear support with preinstalled clips
307501035	Accessorio applicazione con magneti / Magnets application accessory

Descrizione / description

Lineare per esterni 29W/m. Disponibile in versione plafone con staffe e accessorio fissaggio con magneti. Corpo in alluminio anodizzato o verniciato e schermo in resina opale o trasparente. Disponibili nelle temperature colore 3200K - CRI90 / 3500K - CRI 90 / 4500K - CRI80. MacAdam Step 2. Emissione luce diffusa. Forniti con 1m di cavo. Durata L80 B20 a 100.000h Ta (temperatura ambiente) 25°. Alimentatore da ordinare separatamente.

Linear profile for outdoor use 29W/m. Available in ceiling version with brackets and fixing accessories with magnets. Body in anodized or painted aluminum and diffuser in opal or transparent resin. Available in color temperatures 3200K - CRI90 / 3500K - CRI 90 / 4500K - CRI80. MacAdam Step 2. Diffuse light emission. Supplied with 1m cable. Lifespan L80 B20 at 100.000h Ta (ambient temperature) 25°. Ballast to be ordered separately.