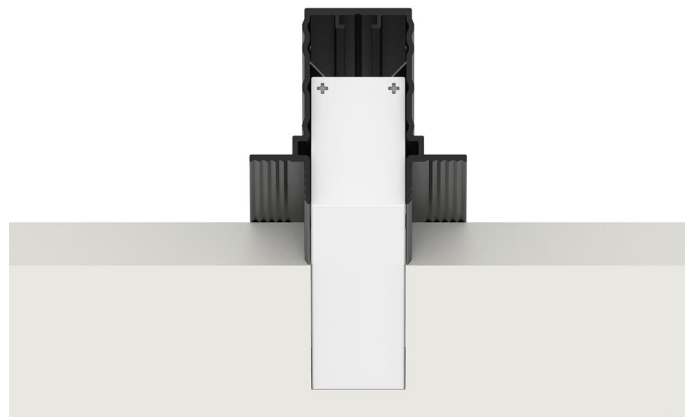


# MEDEA RECESS 29W/m

Sistemi lineari / Linear systems

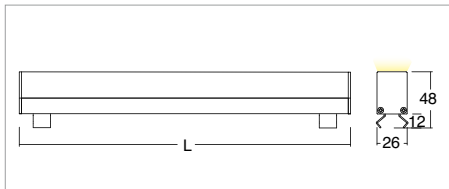


KELVIN	CRI	LUMEN EFFETTIVI / REAL OUTPUT	CLASSE ENERGETICA / ENERGY CLASS
2700	90	~ 1725/m	G
3000	90	~ 1815/m	G
4000	80	~ 2330/m	F

2006/95/CE -- 2002/95/CE -- 1907/2006/CE -- 2010/30/UE -- EN 60598-1 -- EN 60598-2-1 -- EN 60598 2-2 -- EN 62471 -- EN 62031



## Medea Recess 29W/m



Codice/Cod: **3110**    \*\*\*    \*\*\*    \*\*\*    \*\*\*    \*\*\*    \*\*\*

FORMA SHAPE	FINITURA FINISH	COLORE COLOUR	OTTICHE OPTICALS	LUNGHEZZA LENGTH
Lineare / Linear	White <input type="checkbox"/> RAL 9010	4000 K 3000 K 2700 K	Diffused	(max 2000)

### ACCESSORI / ACCESSORIES

330003300	(Vin 220/240Vac) 24Vdc - 20W
330003400	(Vin 220/240Vac) 24Vdc - 60W
330003500	(Vin 220/240Vac) 24Vdc - 35W
330003100	(Vin 220/240Vac) 24Vdc - 100W
330007100	(Vin 220/240Vac) 24Vdc - 150W
330006600	(Vin 220/240Vac) 24Vdc - 60W - Dimmer Push
330008101	(Vin 24Vdc) - 240W - Dimmer Push, 0-10, 1-10
330008102	(Vin 24Vdc) - 240W - Dimmer Push, 0-10, 1-10, DALI
305000027	Controcassa per Medea Recess / Outer casing for Medea Recess
305000020	Tappo per controcassa medea / End cap for medea outer casing
307500018	Cavo 2x0.35 / Cable 2x0.35

## Descrizione / description

Lineare per interni con luce su 3 lati 29W/m. Disponibile in versione incasso trimless. Corpo in alluminio anodizzato o verniciato e schermo in PMMA. Disponibili nelle temperature colore 2700K - CRI90 / 3000K - CRI 90 / 4000K - CRI80, MacAdam Step 2. Emissione luce diffusa. Forniti con 1m di cavo. Durata L80 B20 a 100.000h Ta (temperatura ambiente) 25°. Alimentatore da ordinare separatamente.

Linear profile for indoor use with light to the sides and downwards, 29W/m. Available as trimless recessed. Anodized or painted aluminum housing and PMMA shade. Available in color temperatures 2700K - CRI90 / 3000K - CRI 90 / 4000K - CRI80, MacAdam Step 2. Diffuse light emission. Supplied with 1m cable. Lifetime L80 B20 at 100.000h Ta (ambient temperature) 25°. Ballast to be ordered separately.