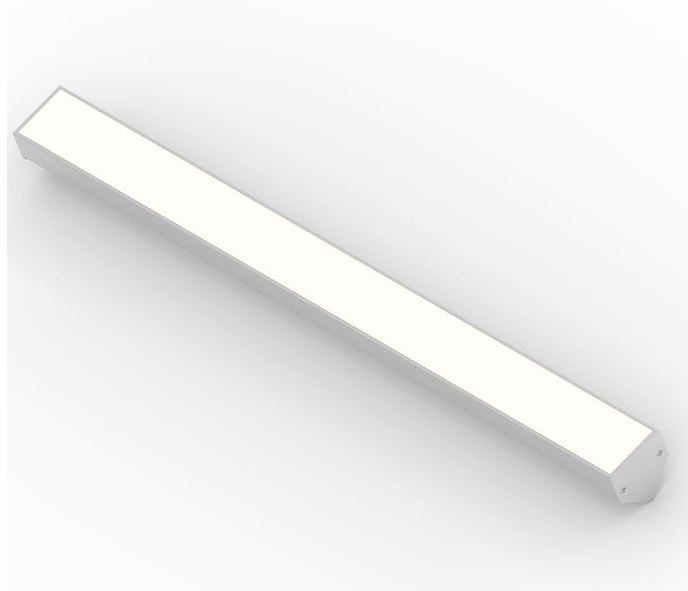


JETRO45 29W/m

Sistemi lineari / Linear systems

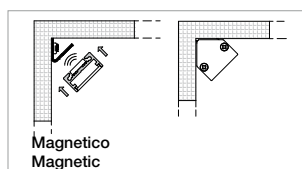
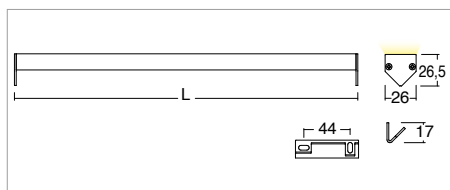


KELVIN	CRI	LUMEN EFFETTIVI / REAL OUTPUT	CLASSE ENERGETICA / ENERGY CLASS
2700	90	~ 1850/m	G
3000	90	~ 1940/m	G
4000	80	~ 2500/m	F

2006/95/CE -- 2002/95/CE -- 1907/2006/CE -- 2010/30/UE -- EN 60598-1 -- EN 60598-2-1 -- EN 62471 -- EN 62031



Jetro45 29W/m



Codice/Cod: 3125

FORMA SHAPE	FINITURA FINISH	COLORE COLOUR	OTTICHE OPTICALS	LUNGHEZZA LENGTH
Lineare / Linear	White □ RAL 9010 Anodized ■ ANODIZED Black ■ RAL 9005	4000 K 3000 K 2700 K	Diffused Transparent	(max 2000)

ACCESSORI / ACCESSORIES

330003300	(Vin 220/240Vac) 24Vdc - 20W
330003400	(Vin 220/240Vac) 24Vdc - 60W
330003500	(Vin 220/240Vac) 24Vdc - 35W
330003100	(Vin 220/240Vac) 24Vdc - 100W
330007100	(Vin 220/240Vac) 24Vdc - 150W
330006600	(Vin 220/240Vac) 24Vdc - 60W - Dimmer Push
330008101	(Vin 24Vdc) - 240W - Dimmer Push, 0-10, 1-10
330008102	(Vin 24Vdc) - 240W - Dimmer Push, 0-10, 1-10, DALI
307500018	Cavo 2X0,35 / Cable 2x0.35

Descrizione / description

Lineare per interni 29W/m. Disponibile con staffe e accessorio fissaggio con magneti. Corpo in alluminio anodizzato o verniciato e schermo in PMMA opale o trasparente. Disponibili nelle temperature colore 2700K - CRI90 / 3000K - CRI 90 / 4000K - CRI80. MacAdam Step 2. Emissione luce diffusa. Forniti con 1m di cavo. Durata L80 B20 a 100.000h Ta (temperatura ambiente) 25°. Alimentatore da ordinare separatamente.

Linear profile for indoor use 29W/m. Available with brackets and fixing accessories with magnets. Body in anodized or painted aluminum and diffuser in opal or transparent PMMA. Available in color temperatures 2700K - CRI90 / 3000K - CRI 90 / 4000K - CRI80. MacAdam Step 2. Diffuse light emission. Supplied with 1m cable. Lifespan L80 B20 at 100.000h Ta (ambient temperature) 25°. Ballast to be ordered separately.