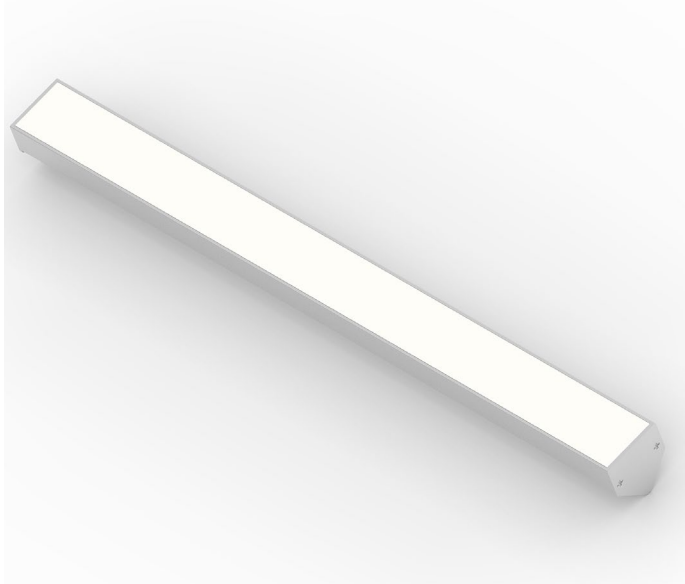


JETRO45 20W/m IP65

Sistemi lineari / Linear systems

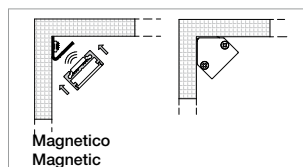
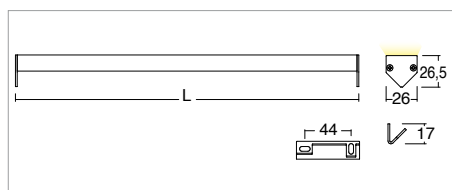


| KELVIN | CRI | LUMEN EFFETTIVI / REAL OUTPUT | CLASSE ENERGETICA / ENERGY CLASS |
|--------|-----|-------------------------------|----------------------------------|
| 2700 | 90 | ~ 1320/m | G |
| 3000 | 90 | ~ 1390/m | G |
| 4000 | 80 | ~ 1750/m | F |

2006/95/CE -- 2002/95/CE -- 1907/2006/CE -- 2010/30/UE -- EN 60598-1 -- EN 60598-2-1 -- EN 62471 -- EN 62031



Jetro45 20W/m IP65



Codice/Cod: **3132**

| FORMA SHAPE | FINITURA FINISH | COLORE COLOUR | OTTICHE OPTICALS | LUNGHEZZA LENGHT |
|----------------------------|-------------------------------------|----------------------------|---|------------------|
| Lineare / Linear 00 | Anodized 4 Black 6 | 4500 K 3500 K 3200 K | Diffused 0 Transparent 9 | (max 2000) |

ACCESSORI / ACCESSORIES

| | |
|------------------|--|
| 330003300 | (Vin 220/240Vac) 24Vdc - 20W |
| 330003400 | (Vin 220/240Vac) 24Vdc - 60W |
| 330003500 | (Vin 220/240Vac) 24Vdc - 35W |
| 330003100 | (Vin 220/240Vac) 24Vdc - 100W |
| 330007100 | (Vin 220/240Vac) 24Vdc - 150W |
| 330006600 | (Vin 220/240Vac) 24Vdc - 60W - Dimmer Push |
| 330008101 | (Vin 24Vdc) - 240W - Dimmer Push, 0-10, 1-10 |
| 330008102 | (Vin 24Vdc) - 240W - Dimmer Push, 0-10, 1-10, DALI |
| 307500016 | Cavo PVC bianco 2X0,35 / White PVC cable 2x0.35 |

Descrizione / description

Lineare per esterni 20W/m. Disponibile con staffe e accessorio fissaggio con magneti. Corpo in alluminio anodizzato o verniciato e schermo in resina opale o trasparente. Disponibili nelle temperature colore 3200K - CRI90 / 3500K - CRI 90 / 4500K - CRI80. MacAdam Step 2. Emissione luce diffusa. Forniti con 1m di cavo. Durata L80 B20 a 100.000h Ta (temperatura ambiente) 25°. Alimentatore da ordinare separatamente.

Linear profile for outdoor use 20W/m. Available with brackets and fixing accessories with magnets. Body in anodized or painted aluminum and diffuser in opal or transparent resin. Available in color temperatures 3200K - CRI90 / 3500K - CRI 90 / 4500K - CRI80. MacAdam Step 2. Diffuse light emission. Supplied with 1m cable. Lifespan L80 B20 at 100.000h Ta (ambient temperature) 25°. Ballast to be ordered separately.