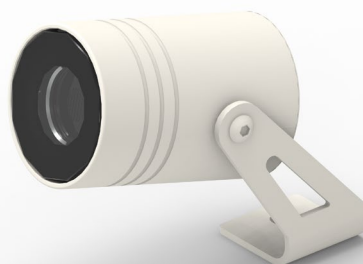


ESYR 2,1W

Proiettori / Floodlights

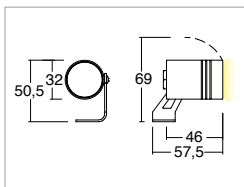


KELVIN	CRI	LUMEN EFFETTIVI / REAL OUTPUT	CLASSE ENERGETICA / ENERGY CLASS
2700	90	~ 180	F
3000	90	~ 180	F
4000	80	~ 230	E

2006/95/CE -- 2002/95/CE -- 1907/2006/CE -- 2010/30/UE -- EN 60598-1 -- EN 60598-2-1 -- EN 62471 -- EN 62031



EsyR 2,1W



Codice/Cod: **3170**

FORMA SHAPE	FINITURA FINISH	COLORE COLOUR	OTTICHE OPTICALS
Tondo / Round	Antracite ■ RAL 7016 White □ RAL 9010 Grey ■ RAL 7042 Black ■ RAL 9005 Cor-ten ■ SX350F MA.SA.	4000 K 3000 K 2700 K Red Green Blu	20° 30° 50° 120°

ACCESSORI / ACCESSORIES

330010000	(Vin 220/240Vac) 700mA - 7.7W - IP20
330009700	(Vin 220/240Vac) 700mA - 10W - IP20
330009500	(Vin 220/240Vac) 700mA - 14W - IP67
330009900	(Vin 220/240Vac) 700mA - 30W (min 14W) - IP67
330007800	(Vin 220/240Vac) 700mA - 20W (min 7W)
330007200	(Vin 220/240Vac) 700mA - 28W (min 2W) - Dimmer Push, 0-10, 1-10, DALI
307500019	Picchetto in acciaio / Steel picket
307500010	Cavo neoprene 2X0,5 / Neoprene cable 2x0.5
307500020	Connettore IP68 / IP68 connector
307500044	Sistema NOW con convertitore 24Vdc - 700mA / NOW System with 24vdc - 700mA converter
307500071	Opzione vetro satinato / Satin glass option
Accessorio cannocchiale asimmetrico / Asymmetrical telescope	

Descrizione / description

Proiettori orientabili per uso esterno IP66, potenza 2.1W. Installazione con staffa. Forma tonda, corpo in alluminio anodizzato. Finitura ottenuta mediante verniciatura a polvere. Disponibili nelle temperature colore 2700K - CRI90 / 3000K - CRI 90 / 4000K - CRI80, MacAdam Step 2. Ottiche 20°/30°/50°/120°. Forniti con 1m di cavo neoprene sezione 2x0.5mm. Durata L80 B20 a 100.000h Ta (temperatura ambiente) 25°. Versione con alimentatore da ordinare separatamente.

IP66 adjustable spotlights for outdoor use, wattage 2.1W. Installation with steel bracket. Round shape, anodised aluminium body. Finish obtained by powder-coating. Available in colour temperatures 2700K - CRI90 / 3000K - CRI 90 / 4000K - CRI80, MacAdam Step 2. Optical lenses 20°/30°/50°/120° light emission. Supplied with 1m of 2x0.5mm section neoprene cable. Durability L80 B20 at 100.000h Ta (ambient temperature) 25°. Version with ballast to be ordered separately.