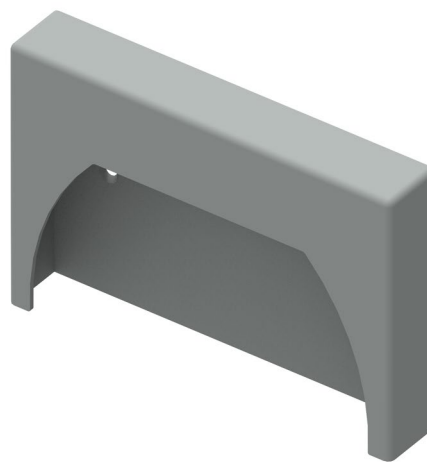


LIVIT 24VDC

Segnapassi / Guide lights

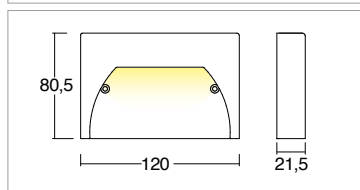


KELVIN	CRI	LUMEN EFFETTIVI / REAL OUTPUT	CLASSE ENERGETICA / ENERGY CLASS
3200	90	~ 150	G
3500	90	~ 160	G
4500	80	~ 200	F

2006/95/CE -- 2002 /95/CE -- 1907/2006/CE -- 2010/30/UE -- EN 60598-1 -- EN 60598-2-1
EN 60598-2-2 -- EN 62471 -- EN 62031



Livit 24Vdc



Codice/Cod: **3204**

FORMA SHAPE	FINITURA FINISH	COLORE COLOUR	OTTICHE OPTICALS
Quadrato / Square	20	2, 3, 5, 6, 8	2, 3, W
	Anthracite ■ RAL 7016 White □ RAL 9010 Grey ■ RAL 7042 Black ■ RAL 9005 Cor-ten ■ SX350F MA.SA.	4500 K 3500 K 3200 K	Asymmetric

ACCESSORI / ACCESSORIES

330003300	(Vin 220/240Vac) 24Vdc - 20W
330003400	(Vin 220/240Vac) 24Vdc - 60W
330003500	(Vin 220/240Vac) 24Vdc - 35W
330003100	(Vin 220/240Vac) 24Vdc - 100W
330007100	(Vin 220/240Vac) 24Vdc - 150W
330006600	(Vin 220/240Vac) 24Vdc - 60W - Dimmer Push
330008101	(Vin 24Vdc) 24Vdc - 240W - Dimmer Push, 0-10, 1-10
330008102	(Vin 24Vdc) 24Vdc - 240W - Dimmer Push, 0-10, 1-10, DALI
307500016	Cavo PVC bianco 2x0.35 / PVC white cable 2x0.35
305000035	Scatola standard 503 / Outr casing standard 503

Descrizione / description

Faretto segnapasso a parete per esterni IP65 da 2.5W. Installazione a parete o su controcassa standard 503. Corpo in alluminio, finitura ottenuta mediante verniciatura a polvere. Disponibile nelle temperature colore 3200K - CRI90 / 3500K - CRI 90 / 4500K - CRI80, MacAdam Step 2. Emissione luce diffusa rivolta verso il basso. Prodotto fornito con 1m di cavo PVC bianco sezione 2x0.35mm. Durata L80 B20 a 100.000h Ta (temperatura ambiente) 25°. Alimentatore da ordinare separatamente.

IP65 2.5W outdoor wall-mounted spotlight. Wall installation or on standard 503 back box. Aluminium body, powder-coated finish. Available in colour temperatures 3200K - CRI90 / 3500K - CRI 90 / 4500K - CRI80, MacAdam Step 2. Diffused downward light emission. Product supplied with 1m white PVC cable 2x0.35mm section. Service life L80 B20 at 100,000h Ta (ambient temperature) 25°. Ballast to be ordered separately.