

KARAH L. 230V

Applique / Wall lamp

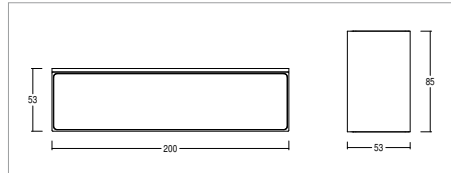
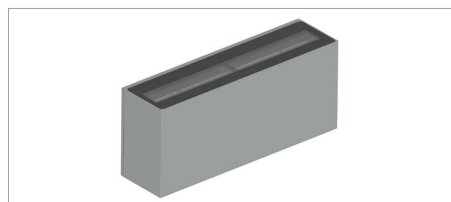


| KELVIN | CRI | LUMEN EFFETTIVI / REAL OUTPUT | CLASSE ENERGETICA / ENERGY CLASS |
|--------|-----|-------------------------------|----------------------------------|
| 2700 | 90 | ~ 600/600 | F |
| 3000 | 90 | ~ 600/600 | F |
| 4000 | 80 | ~ 750/750 | E |

2006/95/CE -- 2002/95/CE -- 1907/2006/CE -- 2010/30/UE -- EN 60598-1 -- EN 60598-2-1 -- EN 60598 2-6 -- EN 62471 -- EN 62031



Karah L. D 6W 230V



W
6

Codice/Cod: **3238**

| FORMA SHAPE | FINITURA FINISH | COLORE COLOUR | OTTICHE OPTICALS |
|-------------------|---|----------------------------|-------------------------|
| Quadrato / Square | Anthracite ■ RAL 7016 White □ RAL 9010 Grey ■ RAL 7042 Black ■ RAL 9005 Cor-ten ■ SX350F MA.SA. | 4000 K 3000 K 2700 K | Wall washer Diffused |

Descrizione / description

Lampada da parete per esterno IP65 luce diretta con potenza 6W per emissione. Installazione con staffa a parete senza viti a vista. Forma rettangolare. Corpo in alluminio, finitura ottenuta mediante verniciatura a polvere. Disponibili nelle temperature colore 2700K - CRI90 / 3000K - CRI 90 / 4000K - CRI80, MacAdam Step 2. Ottiche wall washer / Diffusa. Durata L80 B20 a 100.000h Ta (temperatura ambiente) 25°. Alimentatore incorporato nel prodotto.

Outdoor wall lamp IP65 direct light with wattage 6W per emission. Installation with bracket without visible screws. Rectangular shapes. Aluminium body, powder-coated finish. Available in colour temperatures 2700K - CRI90 / 3000K - CRI 90 / 4000K - CRI80, MacAdam Step 2. Optics wall washer / Diffuse light emission. Service life L80 B20 at 100.000h Ta (ambient temperature) 25°. Built-in ballast.