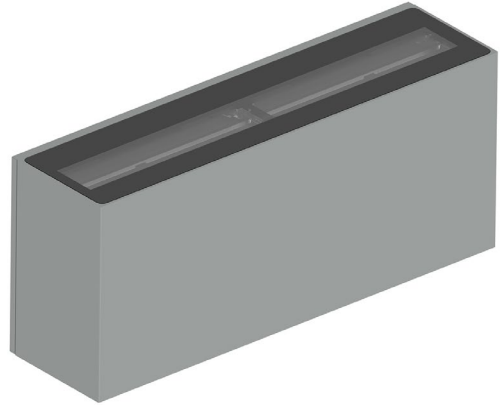


KARAH L.E. 230V

Applique / Wall lamp

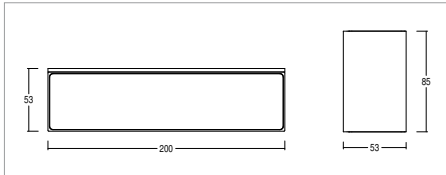
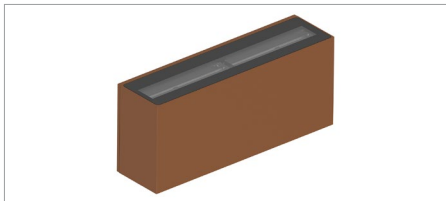


KELVIN	CRI	LUMEN EFFETTIVI / REAL OUTPUT	CLASSE ENERGETICA / ENERGY CLASS
2700	90	~ 305/305	G
3000	90	~ 320/320	G
4000	80	~ 415/415	F

2006/95/CE -- 2002 /95/CE -- 1907/2006/CE -- 2010/30/UE -- EN 60598-1 -- EN 60598-2-1
-- EN 60598 2-6 -- EN 62471 -- EN 62031



Karah L.E. D 4,8W 230V



W
4,8

Codice/Cod: **3239**

FORMA SHAPE	FINITURA FINISH	COLORE COLOUR	OTTICHE OPTICALS
Quadrato / Square	<ul style="list-style-type: none"> Anthracite ■ RAL 7016 White □ RAL 9010 Grey ■ RAL 7042 Black ■ RAL 9005 Cor-ten ■ SX350F MA.SA. 	<ul style="list-style-type: none"> 4000 K 3000 K 2700 K 	<ul style="list-style-type: none"> Diffused

Descrizione / description

Lampada da parete per esterno IP65 luce diretta con potenza 4.8W per emissione. Installazione con staffa a parete senza viti a vista. Forma rettangolare. Corpo in alluminio, finitura ottenuta mediante verniciatura a polvere. Disponibili nelle temperature colore 2700K - CRI90 / 3000K - CRI 90 / 4000K - CRI80, MacAdam Step 2. Ottica diffusa. Durata L80 B20 a 100.000h Ta (temperatura ambiente) 25°. Alimentatore incorporato nel prodotto.

Outdoor wall lamp IP65 direct light with wattage 4.8W per emission. Installation with bracket without visible screws. Rectangular shapes. Aluminium body, powder-coated finish. Available in colour temperatures 2700K - CRI90 / 3000K - CRI 90 / 4000K - CRI80, MacAdam Step 2. Optics diffuse light emission. Service life L80 B20 at 100.000h Ta (ambient temperature) 25°. Built-in ballast.