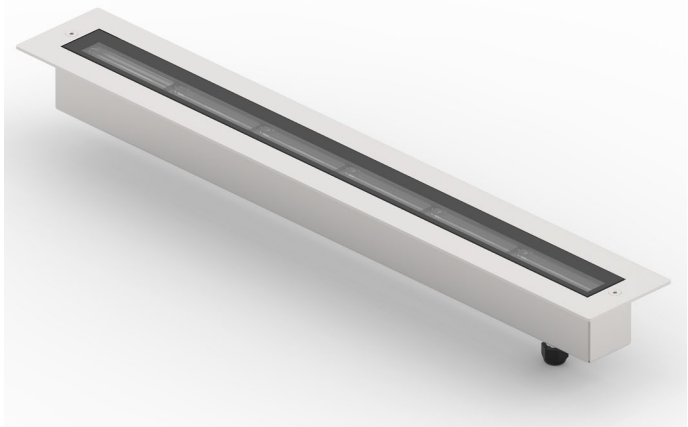


# LETE 9W 24VDC

Incassi calpestabili / Recess walk-over spotlights

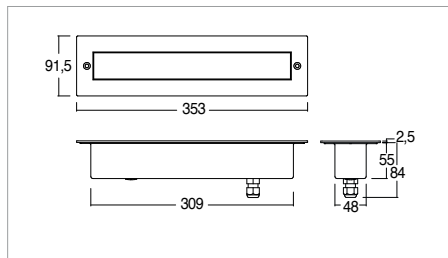


KELVIN	CRI	LUMEN EFFETTIVI / REAL OUTPUT	CLASSE ENERGETICA / ENERGY CLASS
2700	90	~ 900	F
3000	90	~ 900	F
4000	80	~ 1100	E

2006/95/CE -- 2002/95/CE -- 1907/2006/CE -- 2010/30/UE -- EN 60598-1 -- EN 60598-2-1  
EN 60598-2-2 -- EN 60598-2-6 -- EN 60598-2-13 -- EN 62471 -- EN 62031



## Lete 24Vdc 9W



24Vdc



Codice/Cod: **3286**

USCITA CAVO / CABLE OUT	FINITURA FINISH	COLORE COLOUR	OTTICHE OPTICALS
1 Cable exit	Inox <input checked="" type="checkbox"/> AISI 316 STEEL	4000 K	Wall washer
2 Cable exit		3000 K	Diffused
		2700 K	

### ACCESSORI / ACCESSORIES

<b>305000031</b>	Controcassa / Outer casing
<b>307500012</b>	Cavo Neoprene 3X1 / Neoprene cable 3x1
<b>307500020</b>	Connettore IP68 / IP68 connector
<b>330003300</b>	(Vin 220/240Vac) 24Vdc - 20W
<b>330003400</b>	(Vin 220/240Vac) 24Vdc - 60W
<b>330003500</b>	(Vin 220/240Vac) 24Vdc - 35W
<b>330003100</b>	(Vin 220/240Vac) 24Vdc - 100W
<b>330007100</b>	(Vin 220/240Vac) 24Vdc - 150W
<b>330006600</b>	(Vin 220/240Vac) 24Vdc - 60W - Dimmer Push
<b>330008101</b>	(Vin 24Vdc) - 240W - Dimmer Push, 0-10, 1-10
<b>330008102</b>	(Vin 24Vdc) - 240W - Dimmer Push, 0-10, 1-10, DALI

## Descrizione / description

Incassi lineari a pavimento carrabili IP67 / IK10, potenze 9W nelle varie lunghezze. Installazione con controcassa su muratura. Disponibile con flangia in acciaio o solo vetro, corpo in acciaio. Finitura acciaio spazzolato. Disponibili nelle temperature colore 2700K - CRI90 / 3000K - CRI 90 / 4000K - CRI80, MacAdam Step 2. Ottica wall washer o diffusa. Forniti con 1m di cavo neoprene sezione 3x1mm. Durata L80 B20 a 100.000h Ta (temperatura ambiente) 25°. Versione con alimentatore da ordinare separatamente.

IP67 / IK10 drive-over linear floor-recessed downlights, wattages 9W in various lengths. Installation with counter casing on masonry. Available with steel flange or glass only, steel body. Brushed steel finish. Available in colour temperatures 2700K - CRI90 / 3000K - CRI 90 / 4000K - CRI80, MacAdam Step 2. Wall washer or diffused optics. Supplied with 1m neoprene cable section 3x1mm. Service life L80 B20 at 100.000h Ta (ambient temperature) 25°. Version with ballast to be ordered separately available.