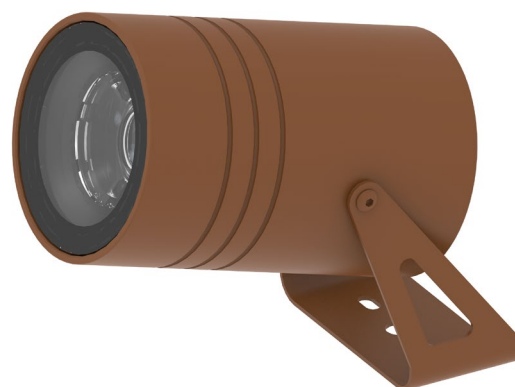


ESYR 12,5W 24VDC

Proiettori / Floodlights

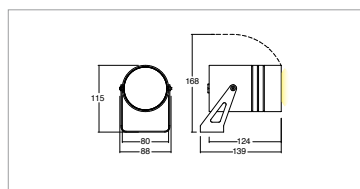


KELVIN	CRI	LUMEN EFFETTIVI / REAL OUTPUT	CLASSE ENERGETICA / ENERGY CLASS
2700	90	~ 1190	F
3000	90	~ 1400	E
4000	80	~ 1410	E

2006/95/CE -- 2002/95/CE -- 1907/2006/CE -- 2010/30/UE -- EN 60598-1 -- EN 60598-2-1 -- EN 62471 -- EN 62031



EsyR 12,5W 24Vdc



Codice/Cod: **3294**

FORMA SHAPE	FINITURA FINISH	COLORE COLOUR	OTTICHE OPTICALS
Tondo / Round	Antracite ■ RAL 7016 White □ RAL 9010 Grey ■ RAL 7042 Black ■ RAL 9005 Cor-ten ■ SX350F MA.SA.	4000 K 3000 K 2700 K 2200 K	20° 50° 70° Diffused

ACCESSORI / ACCESSORIES

307500001	Picchetto in acciaio / Steel picket
307500010	Cavo Neoprene 2X0,5 / Neoprene cable 2x0.5
307500005	Connettore IP68 3 poli / IP68 connector
307500023	Anti abbagliamento alveolare / Non dazzling system
330003300	(Vin 220/240Vac) 24Vdc - 20W
330003400	(Vin 220/240Vac) 24Vdc - 60W
330003500	(Vin 220/240Vac) 24Vdc - 35W
330003100	(Vin 220/240Vac) 24Vdc - 100W
330007100	(Vin 220/240Vac) (Vin 220/240Vac) 24Vdc - 150W
330006600	(Vin 220/240Vac) 24Vdc - 60W - Dimmer Push
330008101	(Vin 24Vdc) - 240W - Dimmer Push, 0-10, 1-10
330008102	(Vin 24Vdc) - 240W - Dimmer Push, 0-10, 1-10, DALI

Accessorio cannocchiale asimmetrico / Asymmetrical telescope

Descrizione / description

Proiettori orientabili per uso esterno IP66, potenza 12.5W. Installazione con staffa o picchetto in acciaio. Forma tonda, corpo in alluminio anodizzato. Finitura ottenuta mediante verniciatura a polvere. Disponibili nelle temperature colore 2200K - CRI65 / 2700K - CRI90 / 3000K - CRI 90 / 4000K - CRI80, MacAdam Step 2. Ottiche 20°/50°/70°/Diffuso. Forniti con 1m di cavo neoprene sezione 2x0.5 mm. Durata L80 B20 a 100.000h Ta (temperatura ambiente) 25°. Versione con alimentatore da ordinare separatamente.

IP66 adjustable spotlights for outdoor use, wattage 12.5W. Installation with steel bracket or spike. Round shape, anodised aluminium body. Finish obtained by powder-coating. Available in colour temperatures 2200K - CRI65 / 2700K - CRI90 / 3000K - CRI 90 / 4000K - CRI80, MacAdam Step 2. Optical lenses 20°/50°/70°/diffused light emission. Supplied with 1m of 2x0.5 mm section neoprene cable. Durability L80 B20 at 100.000h Ta (ambient temperature) 25°. Version with ballast to be ordered separately.