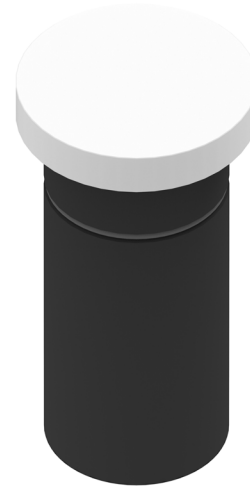


KION 4,8W 24VDC FLATSURFACE

Incassi calpestabili / Recess walk-over spotlights

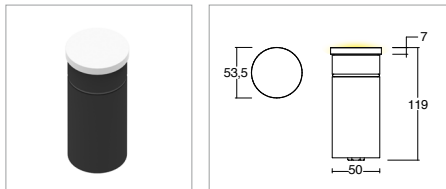


| KELVIN | CRI | LUMEN EFFETTIVI / REAL OUTPUT | CLASSE ENERGETICA / ENERGY CLASS |
|--------|-----|----------------------------------|-------------------------------------|
| 2700 | 90 | ~ 290 | G |
| 3000 | 90 | ~ 340 | G |
| 4000 | 80 | ~ 350 | G |

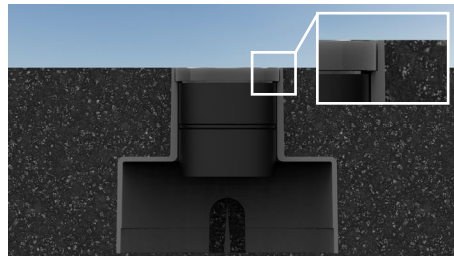
2006/95/CE -- 2002 /95/CE -- 1907/2006/CE -- 2010/30/UE -- EN 60598-1 -- EN 60598-2-1
EN 60598-2-2 -- EN 60598 2-13 -- EN 62471 -- EN 62031



Kion flat surface 4,8W 24Vdc



INCLUDED



Codice/Cod: **3401**

| FORMA SHAPE | FINITURA FINISH | COLORE COLOUR | OTTICHE OPTICALS |
|-----------------|---|----------------------------|---------------------|
| Raso / Trimless | PMMA <input type="checkbox"/> OPAL PMMA | 4000 K 3000 K 2700 K | Diffused |

ACCESSORI / ACCESSORIES

| | |
|-----------|--|
| 305000034 | Controcassa / Outer casing |
| 307500010 | Cavo neoprene 2x0,5 / Neoprene cable 2x0.5 |
| 307500020 | Connettore IP68 / IP68 connector |
| 330003300 | (Vin 220/240Vac) 24Vdc - 20W |
| 330003400 | (Vin 220/240Vac) 24Vdc - 60W |
| 330003500 | (Vin 220/240Vac) 24Vdc - 35W |
| 330003100 | (Vin 220/240Vac) 24Vdc - 100W |
| 330007100 | (Vin 220/240Vac) (Vin 220/240Vac) 24Vdc - 150W |
| 330006600 | (Vin 220/240Vac) 24Vdc - 60W - Dimmer Push |
| 330008101 | (Vin 24Vdc) - 240W - Dimmer Push, 0-10, 1-10 |
| 330008102 | (Vin 24Vdc) - 240W - Dimmer Push, 0-10, 1-10, DALI |

Descrizione / description

Faretto da incasso a soffitto e pavimento IP66, potenza 4.8W. Installazione con controcassa su muratura. Flangia a filo pavimento / soffitto (solo tondo), in PMMA, corpo in alluminio anodizzato nero. Finitura della flangia PMMA satinata. Disponibili nelle temperature colore 2700K - CRI 90 / 3000K - CRI 90 / 4000K - CRI80, MacAdam Step 2. Ottica diffusa. Forniti con 1m di cavo neoprene sezione 2x0.5mm. Durata L80 B20 a 100.000h Ta (temperatura ambiente) 25°. Alimentatore da ordinare separatamente

Ceiling and floor recessed spotlights IP66, wattage 4.8W. Installation with housing box in masonry. Flange flush floor/ceiling (round only), made of PMMA, housing made of black anodized aluminum. PMMA flange in satin finish. Available in color temperatures 2700K - CRI 90 / 3000K - CRI 90 / 4000K - CRI80, MacAdam Step 2. Diffuse optics. Supplied with 1m neoprene cable with 2x0.5mm cross-section. Service life L80 B20 at 100.000h Ta (ambient temperature) 25°. Power supply must be ordered separately.